

## OLD BUFFALO STAMP CLUB PICTURES



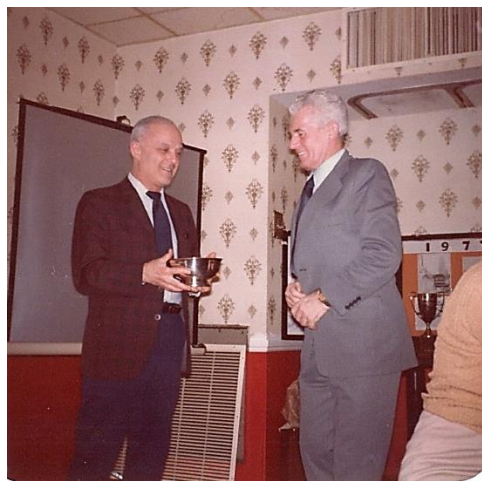
1973 Club Picnic at Birk's. As a guest, Bob Meegan was introduced by Ron Hefner to Club members. Clay Bredl on left, Ron Hefner with pipe, on right ?



1978 - Bob Meegan at Awards Banquet as Speaker: "The Blizzard of '77". Buffalo-Hamilton Reunion. The Founder's Award is on table, previously won by Meegan in 1977. Meegan wins it again this year in 1978.



Koepf Award Winners: Larry Manno(1977), Norv Sellers (1975), Karl Ritz (1978 – New Recipient), Clay Bredl (1976), Clifford Gould (1973)



Larry Manno presenting Koepf Award to Karl Ritz – 1978.



1978 - People at Awards Dinner. Hatzenbueler in front, Clifford Gould at far left.



Norv Sellers, (Unknown - possibly President of Hamilton Club), Clay Bredl, Karl Ritz



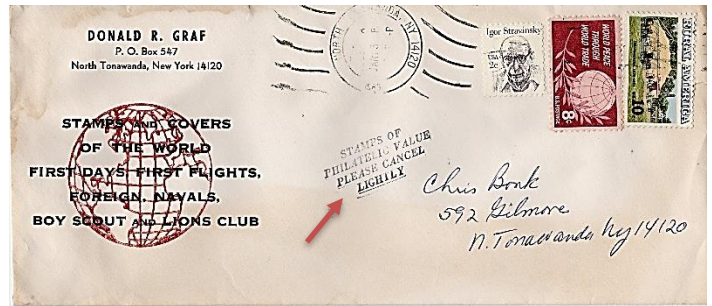
Head Table (left to rt): Bob Meegan (Speaker), Mrs. Metz, Pieter Metz, Mary Walizer (Meegan's date), President of Hamilton Club

# PLEASE CANCEL LIGHTY

By Alan Davis

I'm sure a few of you know that I collect postally used new US stamps. I find it as much or more of a challenge than the other stamps I collect, such as countries or topicals. Besides, it's less costly. In order to be successful, I have recruited a number of friends and family to save whatever stamps-on-envelopes they receive for me. After all, did you know that the USPS issued 122 different stamps in 2022. It's been a tough year to get them all. I mount them with hinges on pages downloaded, printed from the internet, and put in binders. The pages are free at [www.philosateleia.com/album/pages/](http://www.philosateleia.com/album/pages/)

Meanwhile, it's always more desirable for me to have a lightly canceled stamp as opposed to one obliterated by a cancel or even canceled hard enough to take away from the image. Stamps are miniature pieces of art, and it's nice to still see them that way even after traveling through the mail. Here's an example of the National Marine Sanctuaries California sea lions – the one on the left I received initially and, at first, didn't know what it was. When I attach a stamp to an envelope, I place it lower, so that the cancel only covers the top edge. Evidently, I'm not the only one who feels this way. Here are two envelopes from a dealer who felt the same way:



## PICTURES FROM HOLIDAY SOCIAL

DECEMBER 7, 2022 at The Knights Hall



IRVING TESMER RECEIVES HONORARY MEMBER CERTIFICATE

Irv and Lorraine Tesmer