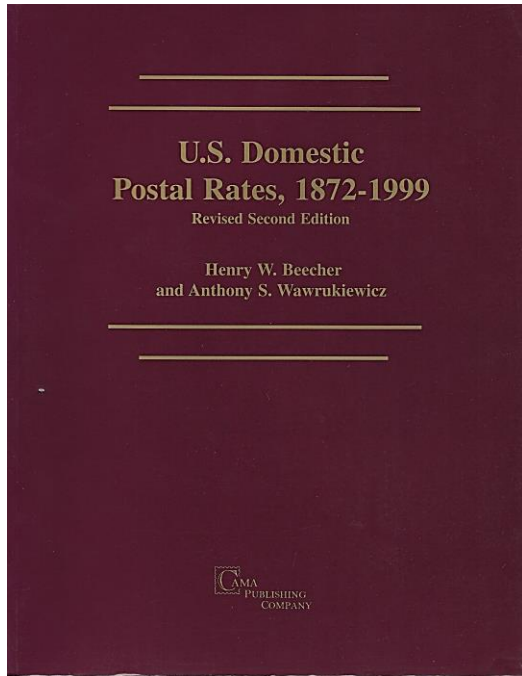


## ESSENTIAL LITERATURE



If you collect US postal history, or even just US stamp issues, this book is required reading. The late Henry W. Beecher and Anthony S. Wawrukiewicz researched and compiled postal laws and records which were difficult and confusing to understand. The layout of the book is simple. The rates are arranged in table format in date sequence according to the service provided.



Using the Beecher book, we can calculate that the above pouch paid 15 cents for first class mailing (5 cents/oz.) rather than the slower fourth-class rate. This pouch was used to send film to be developed.

## HAPPY VALENTINE'S DAY



Valentine's Day is February 14. It is a popular topical area with plenty of stamps and covers available to assemble a nice topical exhibit. Most items are inexpensive. Covers postmarked on February 14 are also popular, especially ship covers. The cover above was postmarked on the USS Idaho.

## PRESIDENTS DAY



In February, we celebrate the birthdays of Abraham Lincoln on February 12 and George Washington on February 22. Years ago, both days were unofficial holidays with some State offices closed. Today, both birthdays are lumped together as the generic "Presidents Day" holiday. This would also be a nice topic!

## AUCTION DONATION LOTS

There have been a number of collections that have been donated to the Club and are in the monthly auctions. They are exceptional value and provide income to the Club. Take advantage!



# BUFFALO STAMP CLUB

[www.buffalostampclub.org](http://www.buffalostampclub.org)

February 2022

Alfred Carroccia

[Fuzzy9600@verizon.net](mailto:Fuzzy9600@verizon.net)

## FEBRUARY NOTES

Winter has arrived with a fury. Snow and bitter cold are prevalent at this time of the year. Of course, this is a perfect time to go through our collections to either organize or set aside unwanted items for the Club auction. Maybe there is an exhibit waiting to be put together!

As the omicron phase of the pandemic wanes, things are beginning to look even more positive, and the Club is continuing to meet. Of course, the health and welfare of Club members is paramount and of great concern to the Club. We believe that we provide a safe and secure environment for our members.

Since things are looking up, the Club has added more dates to the Club Calendar!

New Meetings/Auctions are scheduled for:

**Thursday, April 7<sup>th</sup>**

**Thursday, May 5<sup>th</sup>      Mark Your Calendars!**

**Thursday, June 2<sup>nd</sup>**

A two-day bourse is being planned for mid-August. Dealers from out-of-town are more receptive to two days rather than a one-day show. So, there's value in planning a summer show!

Stay tuned for more information!

## CALENDAR

**Thursday, February 10<sup>th</sup>: Meeting/Auction**

**Saturday & Sunday, March 12<sup>th</sup> & 13<sup>th</sup> :**

**BUFPEX 2022**

**At The Knights Halls, 2735 Union Road just north of William St. in Cheektowaga**

**Auctions** begin immediately following any business and announcements beginning at 7:00 PM.

Arrive early to submit and view lots; seller deadline to submit lots is 6:30 PM

## OFFICERS & COMMITTEES

President: Alan Davis ([ddavis504@roadrunner.com](mailto:ddavis504@roadrunner.com))

Vice President: Dan McNess ([dmcness@mac.com](mailto:dmcness@mac.com))

Secretary: Al Carroccia ([fuzzy9600@verizon.net](mailto:fuzzy9600@verizon.net))

Treasurer: Tim Carey ([careystea@gmail.com](mailto:careystea@gmail.com))

Membership Chairman: Bob Meegan

([meegan9697@roadrunner.com](mailto:meegan9697@roadrunner.com))

Auction Committee Chairman: John Leszak

([coverconnection@gmail.com](mailto:coverconnection@gmail.com))

Auction Manager: Dan Sherwood

Auction Registrar: Kevin Suckow

Auction Assistant: Bennie Passantino

Auction Acctg: Paul Moore ([paulkmoore@verizon.net](mailto:paulkmoore@verizon.net))

Advertising & Publicity Coordinator: Heidi Rust

([youdafox@hotmail.com](mailto:youdafox@hotmail.com))

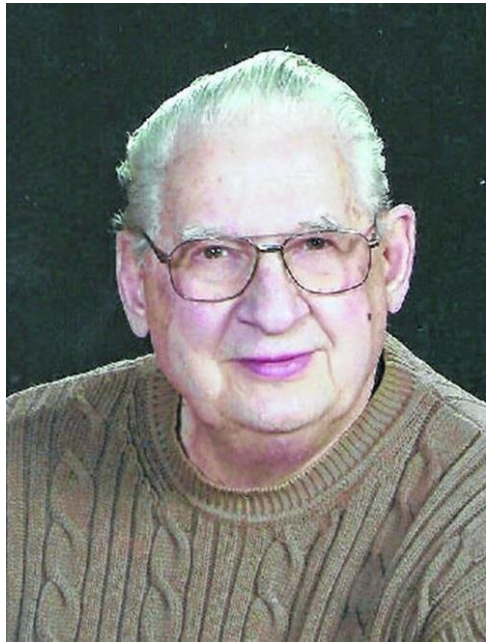
Bourse Chairman: John Leszak ([coverconnection@gmail.com](mailto:coverconnection@gmail.com))

Historical & Library: Al Carroccia & Casey Kielbasa

Other Directors: Larry Cherns ([katchke@hotmail.com](mailto:katchke@hotmail.com)),

Pam Kreuzer ([slothlover4ever24@gmail.com](mailto:slothlover4ever24@gmail.com))

## **BILL ANSTETT**



The Club was saddened to learn Bill Anstett passed away on January 3, 2022. Bill joined the Club in 2014 and was a worldwide collector of stamps. He was not afraid to buy up large collections, patiently sifting, breaking down and organizing stamps that he would later sell at the Club auctions. He will be missed. The Club sends its condolences to his family.

## **KEVIN SUCKOW**

Jay Suckow, Kevin Suckow's brother, passed away on December 31, 2021. The Club sends its condolences to Kevin and to his brother's family.

## **CALL FOR BUFPEX EXHIBITS**

There's not much time left! Get your exhibits put together for BUFPEX.

In order to properly plan for the number of frames needed, please let Bob Meegan know if you plan on exhibiting & how many frames you'd like. Let him know at the meeting or call him at 655-5583 or email him at: [meegan9697@roadrunner.com](mailto:meegan9697@roadrunner.com)

## **BLACK HISTORY MONTH**

February is Black History Month. Stamp Collectors have long recognized the achievements of African-Americans. The Ebony Society of Philatelic Events and Reflections is dedicated to this important area of philately. Their web page is at [www.esperstamps.org](http://www.esperstamps.org). The USPS began the Black Heritage stamp series in 1978 with the 13-cent Harriet Tubman Stamp (Scott 1744). One stamp has been issued each year in February commemorating the achievements from individuals in many areas, including arts, politics, sports and more.

The 2022 stamp honors Edmonia Lewis, the first African American and Native American sculptor to earn international recognition. and was issued on January 26.



The Black Heritage series makes an interesting topic to pursue. Besides stamps, a postal history collection can be collected centering around first day covers and interesting usages showing the different rates throughout the series.

## COLLECTING MACHINS

By Michael Donohue

The British Machin series has been in use since 1967 making it one of the longest running series in postal history at 54 years. Based on a sculpture by Albert Machin, the simple yet elegant design features a profile of the queen and a value or service indicator and in the case of the regionals a heraldic symbol of the region. The series came about as an effort to streamline and simplify British stamps. The Machin provided a standard design with no extra framework that could easily be changed for color and denomination yet still provided an attractive stamp.

Much research work has been done on this series and, as a result, there are several resources you can use to build that perfect collection. Of course, the old stand-by Scott catalog is the best place to start which will help you assemble a complex collection. If you wish to specialize even further, Stanley Gibbons Great Britain Vol. 4 lists about 5,500 variations, and if you want the holy grail on Machins, then the "Deegam Handbook of Machins" with over 8500 variations is what you are after. Along with all the blogs and chat rooms dedicated to this topic, there is no shortage of information on the series.

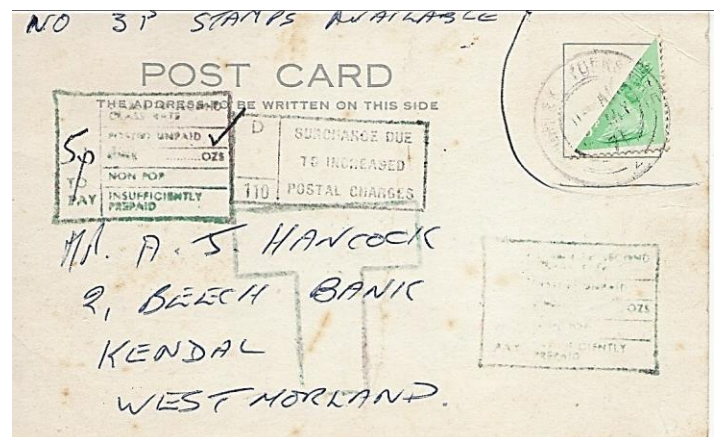


## COLLECTING MACHINS (continued)

The most common way Machins are collected is postally used. This is how I like to collect them because I like postage stamps that were actually used for postage. Go figure!

Sorting a pile of stamps may seem tedious, but I have come up with a way that speeds things up a bit. I use Styrofoam meat trays and then sort first by denomination and color. Then, I can begin sorting by denomination type (the Scott catalog is needed here). Next, by printing method - Photogravure, Lithograph or Engraved.

This step will require a strong magnifying glass. The best place to look is in the denomination. Photo stamps will have a "bumpy" appearance along the edges of the number while Litho stamps will have a clean, sharp edge. Engraved stamps are obvious, in the older issues, they are the big ones, latter issues look like, well, engraved stamps. The last step is checking the perforations. Most Machins are 15 x 14, but depending on who printed them (there are six different printers) and how they were packaged e.g. sheet, booklet or coil, they may be 14 or 13½ x 14.



The above cover is a unique example of Machin postal history. A Machin bisect used illegally on cover, returned postage due.

I hope you found this article interesting and has inspired you to look at that pile of Machins you have laying around and see what kind of collection you can build.